



# DAILY BULLION REPORT

2 April 2026

### BULLDEX SNAPSHOT

Commodity	Expiry	Open	High	Low	Close	% Change
MCXBULLDEX	24-Apr-26	36001.00	36965.00	36001.00	36774.00	2.46

### BULLION SNAPSHOT

Commodity	Expiry	Open	High	Low	Close	% Change
GOLD	5-Jun-26	151427.00	154500.00	151068.00	153708.00	1.95
GOLD	5-Aug-26	153128.00	157000.00	153128.00	156133.00	2.31
GOLDMINI	5-May-26	150283.00	152680.00	149500.00	152024.00	1.88
GOLDMINI	5-Jun-26	151989.00	154562.00	151056.00	153756.00	1.99
SILVER	5-May-26	239257.00	243981.00	238501.00	243501.00	1.08
SILVER	3-Jul-26	244963.00	248756.00	243236.00	248240.00	1.07
SILVERMINI	30-Apr-26	245589.00	247079.00	241057.00	246437.00	2.77
SILVERMINI	30-Jun-26	251193.00	252555.00	246898.00	252003.00	5.18

### OPEN INTEREST SNAPSHOT

Commodity	Expiry	% Change	% Oi Change	Oi Status
MCXBULLDEX	24-Apr-26	2.46	75.00	Fresh Buying
MCXBULLDEX	27-May-26	0.00	0.00	Long Liquidation
GOLD	5-Jun-26	1.95	-0.32	Short Covering
GOLD	5-Aug-26	2.31	4.17	Fresh Buying
GOLDMINI	5-May-26	1.88	-2.88	Short Covering
GOLDMINI	5-Jun-26	1.99	98.22	Fresh Buying
SILVER	5-May-26	1.08	0.03	Fresh Buying
SILVER	3-Jul-26	1.07	0.17	Fresh Buying
SILVERMINI	30-Apr-26	1.11	2.77	Fresh Buying
SILVERMINI	30-Jun-26	1.16	5.18	Fresh Buying

### INTERNATIONAL BULLION SNAPSHOT

Commodity	Open	High	Low	Close	% Change
Gold \$	4784.21	4798.75	4650.30	4702.69	-1.70
Silver \$	75.34	75.87	72.33	72.93	-3.21

### RATIOS

Ratio	Price	Ratio	Price	Ratio	Price
Gold / Silver Ratio	63.12	Silver / Crudeoil Ratio	26.32	Gold / Copper Ratio	131.46
Gold / Crudeoil Ratio	16.61	Silver / Copper Ratio	208.26	Crudeoil / Copper Ratio	7.91

## Important levels for Jewellery/Bullion Dealers



Booking Price for Sellers	Booking Price for Buyers
154018.00	153398.00
154228.00	153188.00



Booking Price for Sellers	Booking Price for Buyers
244221.00	242781.00
244981.00	242021.00



Booking Price for Sellers	Booking Price for Buyers
93.02	92.66
93.24	92.44

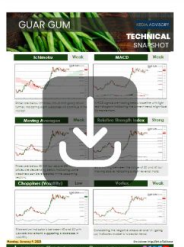
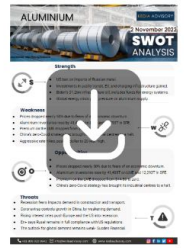


Booking Price for Sellers	Booking Price for Buyers
4715.50	4690.20
4728.40	4677.30



Booking Price for Sellers	Booking Price for Buyers
73.34	72.52
73.65	72.21

Click here for download Kedia Advisory **Special Research Reports**



## Technical Snapshot



**SELL GOLD JUN @ 154500 SL 155800 TGT 153000-152000. MCX**

### Observations

Gold trading range for the day is 149660-156520.

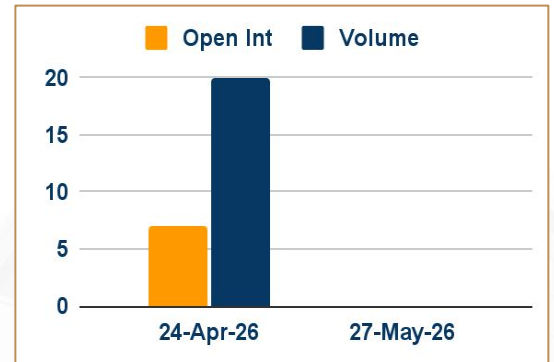
Gold prices rose supported by a weaker dollar as U.S. President Donald Trump said the war with Iran could wind down.

Brazil's central bank doubled its gold holdings in 2025

China's central bank kept purchasing gold for a 16th straight months, with its holdings totalling 74.22 million fine troy ounces.

China's net gold imports via Hong Kong in February rose by 125% from January

### OI & Volume



### Spread

GOLD AUG-JUN	2425.00
GOLDMINI JUN-MAY	1732.00

### Trading Levels

Commodity	Expiry	Close	R2	R1	PP	S1	S2
GOLD	5-Jun-26	153708.00	156520.00	155110.00	153090.00	151680.00	149660.00
GOLD	5-Aug-26	156133.00	159290.00	157710.00	155420.00	153840.00	151550.00
GOLDMINI	5-May-26	152024.00	154580.00	153300.00	151400.00	150120.00	148220.00
GOLDMINI	5-Jun-26	153756.00	156630.00	155195.00	153125.00	151690.00	149620.00
Gold \$		4702.69	4865.45	4783.70	4717.00	4635.25	4568.55

## Technical Snapshot



**SELL SILVER MAY @ 244500 SL 246500 TGT 241500-240000. MCX**

### Observations

Silver trading range for the day is 236515-247475.

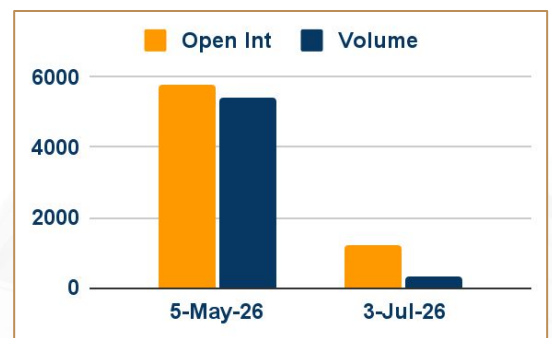
Silver gains amid optimism grows that the US-Israel war with Iran could end soon.

US President Trump, told that the US "will be leaving Iran very soon," adding that military action could end within "two or three weeks."

Fresh US economic data showed the ADP Employment Change rose by 62K in March, beating expectations of 40K.

According to the CME FedWatch Tool, markets expect the Fed to keep interest rates steady at 3.50%-3.75% through 2026.

### OI & Volume



### Spread

SILVER JUL-MAY	4739.00
SILVERMINI JUN-APR	5566.00

### Trading Levels

Commodity	Expiry	Close	R2	R1	PP	S1	S2
SILVER	5-May-26	243501.00	247475.00	245490.00	241995.00	240010.00	236515.00
SILVER	3-Jul-26	248240.00	252265.00	250255.00	246745.00	244735.00	241225.00
SILVERMINI	30-Apr-26	246437.00	250885.00	248665.00	244860.00	242640.00	238835.00
SILVERMINI	30-Jun-26	252003.00	256140.00	254070.00	250485.00	248415.00	244830.00
Silver \$		72.93	77.25	75.09	73.71	71.55	70.17

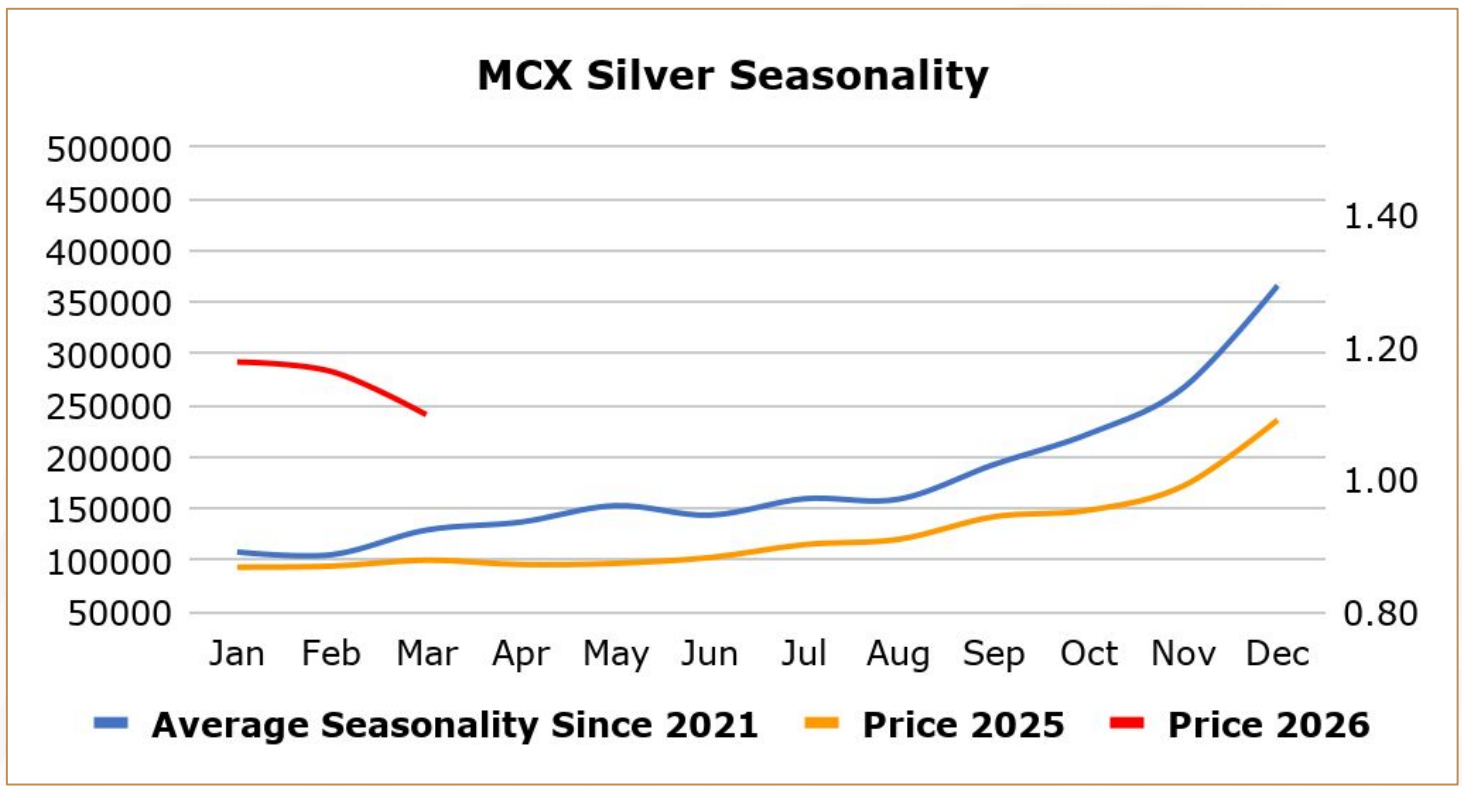
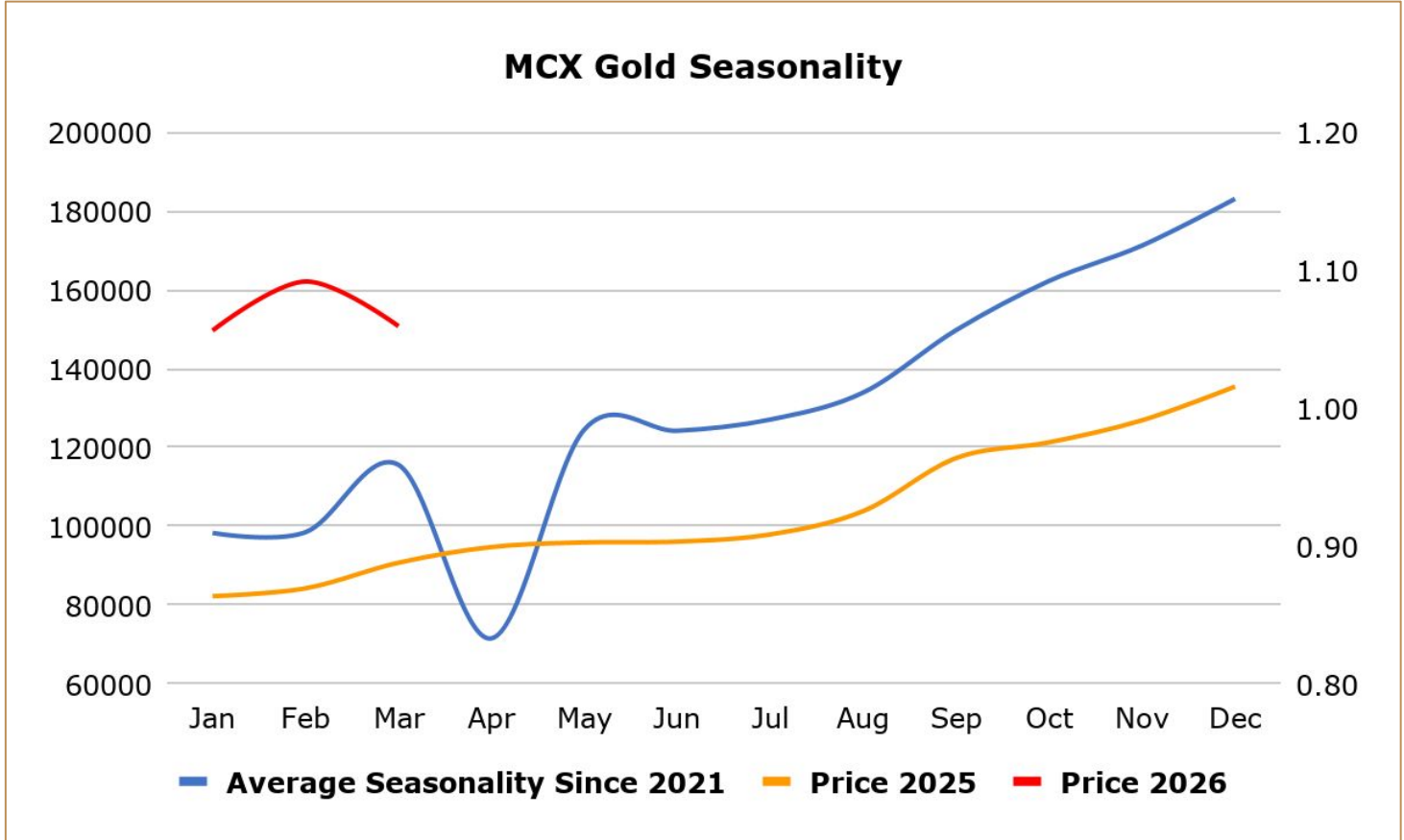
Gold prices rose supported by a weaker dollar as U.S. President Donald Trump said the war with Iran could wind down within weeks. U.S. President Donald Trump said the United States could end its military attacks on Iran within two to three weeks and Tehran did not have to make a deal as a prerequisite for the conflict to wind down. Fed Chair Jerome Powell said the U.S. central bank can wait to see how the Iran war affects the economy and inflation, noting that policymakers typically look through shocks such as those from higher oil prices. Meanwhile, traders have almost completely priced out any chance of a U.S. Federal Reserve rate cut this year, as higher energy prices threaten to feed into broader inflation.

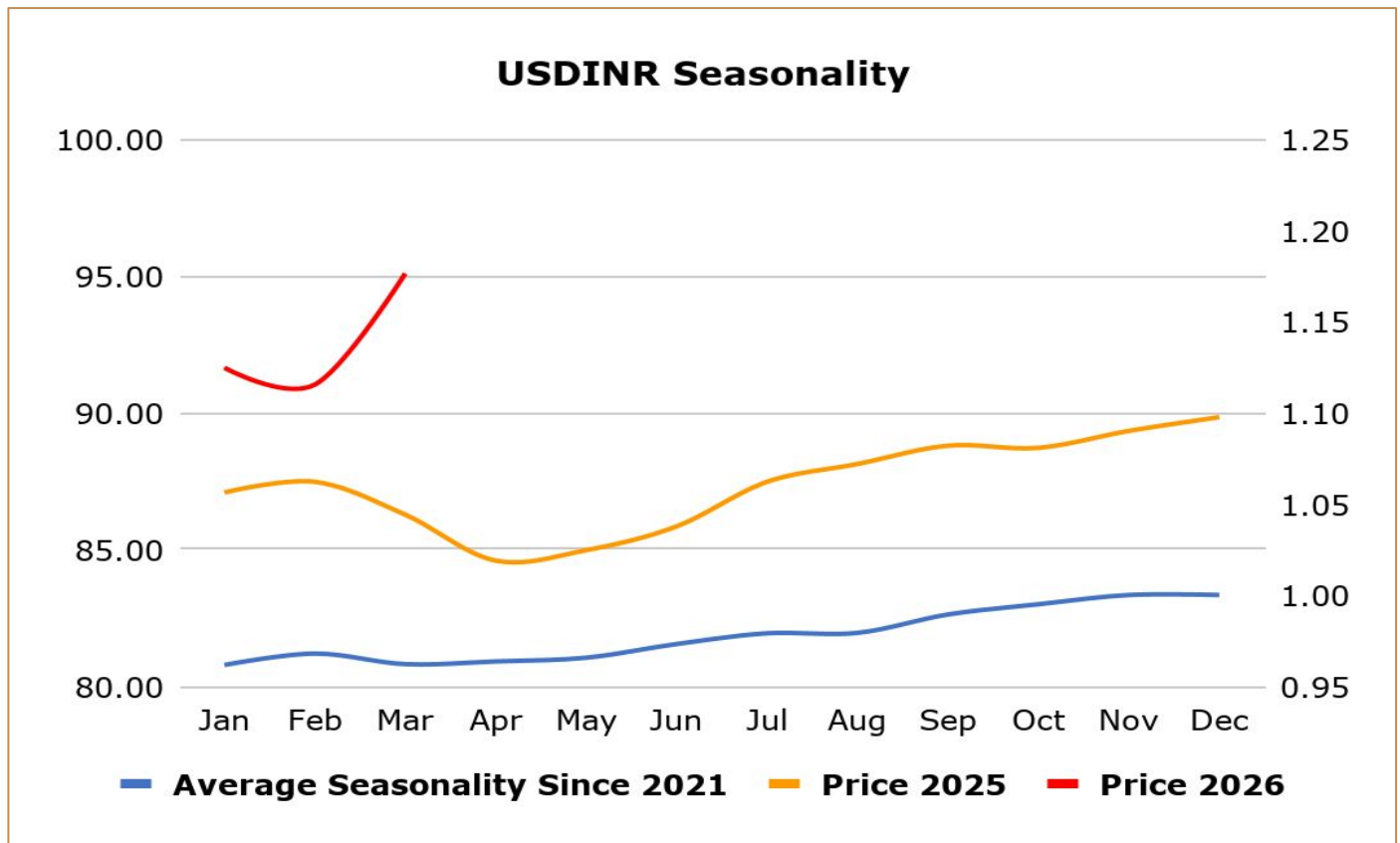
Gold demand in India saw a slight uptick this week as softer bullion prices attracted some buyers, though many remained cautious and held off for further price drop, while premiums in China narrowed as physical demand slowed. Bullion dealers in India offered discounts of up to \$61 per ounce over official domestic gold prices this week, down from as much as \$75 last week. In top consumer China, bullion traded at premiums of \$14-\$18 an ounce over global benchmark prices this week, narrowing from \$10-\$22 premium last week. In Hong Kong, physical gold traded at par to premiums of \$1.90, while in Japan, gold was sold at par with spot prices. In Singapore, gold was sold at prices ranging from a discount of \$0.50 to premiums of \$3.50 an ounce.

Swiss gold exports drop 18% m/m in February - Gold exports from Switzerland in February fell 18% from the previous month to the lowest level since August as shipments to Britain and India slowed, Swiss customs data showed. Deliveries from Switzerland, the world's biggest bullion refining and transit hub, to the UK fell to 20 metric tons last month from 43 tons in January. The UK is home to the world's largest over-the-counter gold trading hub. Supplies to India, a major bullion consumer, slowed to 13 tons in February from 23 tons with bullion trading at a discount in the local market amid subdued demand.

China's January net gold imports via Hong Kong rose almost 69% from December - China's net gold imports via Hong Kong in January rose by 68.7% from December, Hong Kong Census and Statistics Department data. The world's top gold consumer imported a net 20.585 metric tons in January, up from 12.205 tons in December, the data showed. The Hong Kong data may not provide a complete picture of Chinese purchases because gold is also imported via Shanghai and Beijing. China's total gold imports via Hong Kong reached 36.544 tons in January, up 30.4% from December's 28.014 tons. Physical gold in China traded at premiums of \$12-\$13 an ounce above the global benchmark spot price this week as bullion's safe-haven appeal shone through after markets returned from the Lunar New Year holiday. Meanwhile, China's central bank extended its gold buying spree for a 15th month in January, data from the People's Bank of China (PBOC) showed this month.

Goldman Sachs sees gold prices to grind higher to \$5,400/toz by end – 2026 - Goldman Sachs Group Inc. raised its year-end gold price forecast by more than 10%, reflecting growing private-sector diversification into bullion on top of already-strong demand from central banks and exchange-traded funds. The bank raised its December 2026 price target to \$5,400 an ounce, from a prior forecast of \$4,900, on the assumption that private investors who have bought gold as a hedge against macro policy risks will maintain these positions through the end of the year. Central-bank buying is expected to average 60 tons a month in 2026, with monetary authorities in emerging markets "likely to continue the structural diversification of their reserves into gold. Western ETF holdings, meanwhile, have increased by around 500 tons since the start of 2025, outpacing predictions based solely on US interest-rate cuts. Goldman expects a further 50 basis points of Fed easing in 2026.





### Weekly Economic Data

Date	Curr.	Data
Mar 31	EUR	German Import Prices m/m
Mar 31	EUR	German Retail Sales m/m
Mar 31	EUR	German Unemployment Change
Mar 31	EUR	Core CPI Flash Estimate y/y
Mar 31	EUR	CPI Flash Estimate y/y
Mar 31	EUR	Italian Prelim CPI m/m
Mar 31	USD	S&P/CS Composite-20 HPI y/y
Mar 31	USD	Chicago PMI
Mar 31	USD	JOLTS Job Openings
Mar 31	USD	CB Consumer Confidence
Apr 1	EUR	German Final Manufacturing PMI
Apr 1	EUR	Final Manufacturing PMI
Apr 1	EUR	Unemployment Rate

Date	Curr.	Data
Apr 1	USD	Retail Sales m/m
Apr 1	USD	Final Manufacturing PMI
Apr 1	USD	ISM Manufacturing PMI
Apr 1	USD	ISM Manufacturing Prices
Apr 1	USD	Business Inventories m/m
Apr 1	USD	Crude Oil Inventories
Apr 2	EUR	French Gov Budget Balance
Apr 2	USD	Challenger Job Cuts y/y
Apr 2	USD	Unemployment Claims
Apr 2	USD	Trade Balance
Apr 2	USD	Natural Gas Storage
Apr 3	USD	Average Hourly Earnings m/m
Apr 3	USD	Non-Farm Employment Change

# Stay Ahead in Markets with Kedia Advisory



Get Live Commodity & Equity Market Updates backed by in-depth research, data-driven insights, and expert analysis.

## Why Kedia Advisory

-  Real-time market updates
-  Key levels & trend direction
-  Research-based market views
-  Trusted by active traders & investors

Visit: Kedia Advisory Website

[www.kediaadvisory.com](http://www.kediaadvisory.com)

CLICK HERE



SCAN ME



**Kedia Stocks and Commodities Research Pvt Ltd**

SEBI REGISTRATION NUMBER : INH000006156

Aadinath Commercial, Opp. Mumbai University, Vasant Valley Road, Khadakpada, Kalyan West

Investment in securities market are subject to market risks, read all the Related documents carefully before investing.



**Scan the QR to  
connect with us**

**KEDIA ADVISORY**

## **KEDIA STOCKS & COMMODITIES RESEARCH PVT LTD.**

Mumbai. INDIA.

For more details, please contact Mobile: +91 9619551022

Email: [info@kediaadvisory.com](mailto:info@kediaadvisory.com)

SEBI REGISTRATION NUMBER - INH000006156

For more information or to subscribe for monthly updates

Visit [www.kediaadvisory.com](http://www.kediaadvisory.com)

This Report is prepared and distributed by Kedia Stocks & Commodities Research Pvt Ltd. for information purposes only. The recommendations, if any, made herein are expressions of views and/or opinions and should not be deemed or construed to be neither advice for the purpose of purchase or sale through KSCRPL nor any solicitation or offering of any investment /trading opportunity. These information/opinions/ views are not meant to serve as a professional investment guide for the readers. No action is solicited based upon the information provided herein. Recipients of this Report should rely on information/data arising out of their own investigations. Readers are advised to seek independent professional advice and arrive at an informed trading/investment decision before executing any trades or making any investments. This Report has been prepared on the basis of publicly available information, internally developed data and other sources believed by KSCRPL to be reliable. KSCRPL or its directors, employees, affiliates or representatives do not assume any responsibility for or warrant the accuracy, completeness, adequacy and reliability of such information/opinions/ views. While due care has been taken to ensure that the disclosures and opinions given are fair and reasonable, none of the directors, employees, affiliates or representatives of KSCRPL shall be liable for any direct, indirect, special, incidental, consequential, punitive or exemplary damages, including lost profits arising in any way whatsoever from the information/opinions/views contained in this Report. The possession, circulation and/or distribution of this Report may be restricted or regulated in certain jurisdictions by appropriate laws. No action has been or will be taken by KSCRPL in any jurisdiction (other than India), where any action for such purpose (s) is required. Accordingly, this Report shall not be possessed, circulated and/ or distributed in any such country or jurisdiction unless such action is in compliance with all applicable laws and regulations of such country or jurisdiction. KSCRPL requires such a recipient to inform himself about and to observe any restrictions at his own expense, without any liability to KSCRPL. Any dispute arising out of this Report shall be subject to the exclusive jurisdiction of the Courts in India.